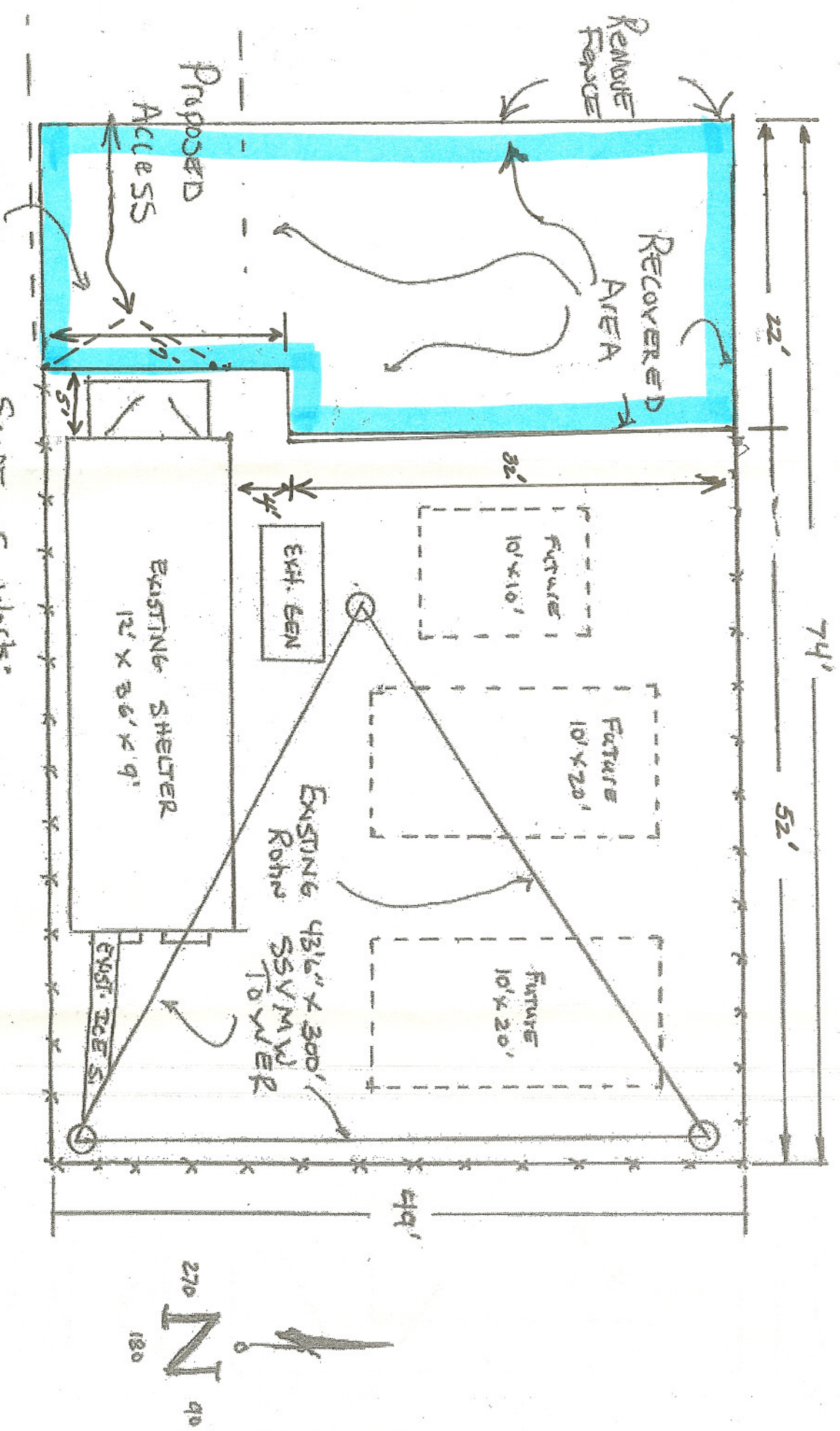


Scale: 1" = 10'



Scope of Work:

- REMOVE ALL EXT DISHES

NAPERVILLE, IL

MOVE GATE

PROPOSED ACCESS

REMOVE FENCE

RECOVERED AREA

EXISTING SHEETER
12' x 36' x 9''

EXISTING 43 1/2' x 300'
ROHM SSV MVD
TOWER

FUTURE
10' x 10'

FUTURE
10' x 20'

FUTURE
10' x 20'

270
N
180
90

22'

74'

52'

32'

49'

5'

4'

EXIST. GATE S.